

# Installation Manual

CITROEN BERLINGO XL 5DR  
CIT-BERXL-5-CX



## Shades



Side Shades



Port Shades



Tailgate Shades

## Fixing Clips



CL-M12 x 10



CL-P02 x 6



CL-M05 x 2



CL-M14 x 1



CL-W01 x 1



CL-T01 x 1

**CAR**  
SHADES

# Installation

CITROEN BERLINGO XL 5DR  
CIT-BERXL-5-CX

## Components Needed



Side Shades



CL-M12 x 2



CL-M05 x 2



CL-T01 x 1

## Side Shade Installation

### STEP 1



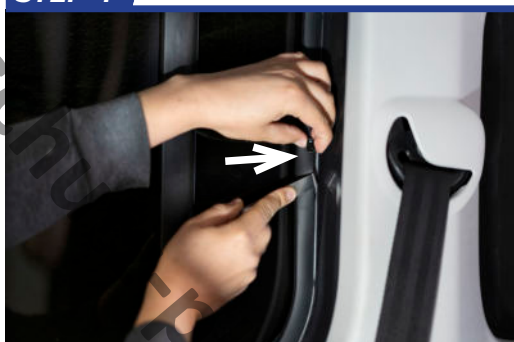
### STEP 2



### STEP 3



### STEP 4



### STEP 5



### STEP 6



# Installation

CITROEN BERLINGO XL 5DR  
CIT-BERXL-5-CX



## Side Shade Installation

### STEP 7



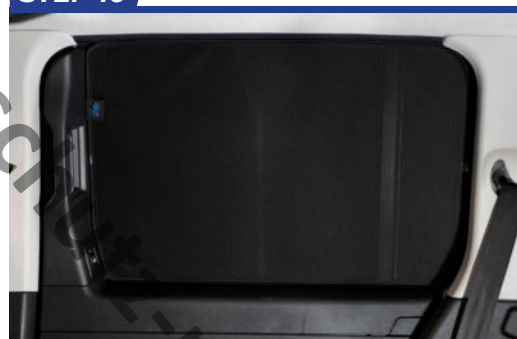
### STEP 8



### STEP 9



### STEP 10



Repeat this whole process for the other side.

# Installation

CITROEN BERLINGO XL 5DR  
CIT-BERXL-5-CX

## Components Needed



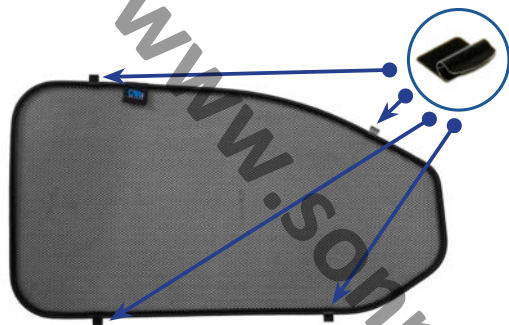
Port Shades



CL-M12 x 8

## Port Shade Installation

### STEP 1



### STEP 2



### STEP 3



### STEP 4



### STEP 5



### STEP 6



Repeat this whole process for the other side.

# Installation

CITROEN BERLINGO XL 5DR  
CIT-BERXL-5-CX

## Components Needed



Tailgate Shades



CL-M14 x1



CL-P02 x 6



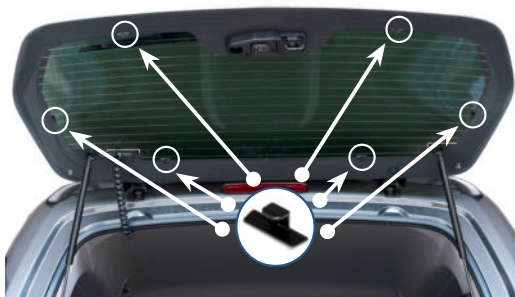
CL-W01 x1

## Tailgate Shade Installation

### STEP 1



### STEP 2



### STEP 3



### STEP 4

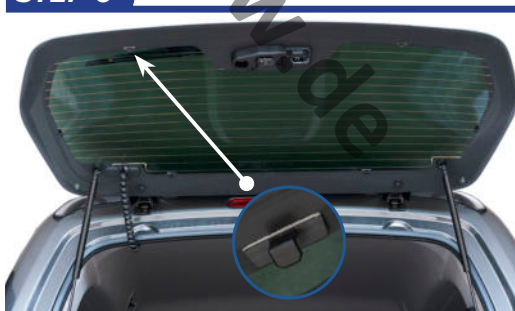


Press and hold clips in place for 30 Seconds

### STEP 5



### STEP 6



Repeat steps 3 & 4 for the other P02 clips

# Installation

CITROEN BERLINGO XL 5DR  
CIT-BERXL-5-CX



## Tailgate Shade Installation

### STEP 7



### STEP 8



### STEP 9



### STEP 10



### STEP 11



### STEP 12



Repeat this whole process for the other side.

# Installation

CITROEN BERLINGO XL 5DR  
CIT-BERXL-5-CX



## Tailgate Shade Installation

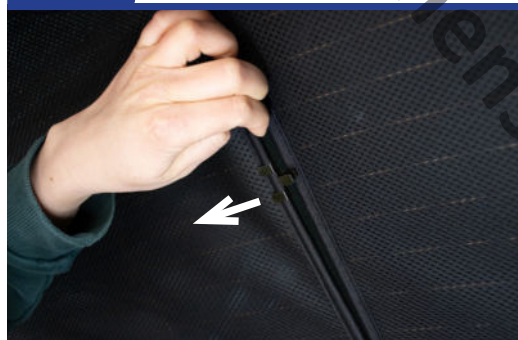
### STEP 13



### STEP 14



### STEP 15



### STEP 16



### STEP 17

